

### Anti-CometGFP™ polyclonal

Anti-CometGFP is a rabbit polyclonal generated by immunizing rabbits with purified CometGFP protein. The antibody was affinity purified and dialysed against PBS with 0.02% sodium azide.

**Catalog Number:** AB-02

**Type:** Affinity purified Rabbit IgG, lyophilized.

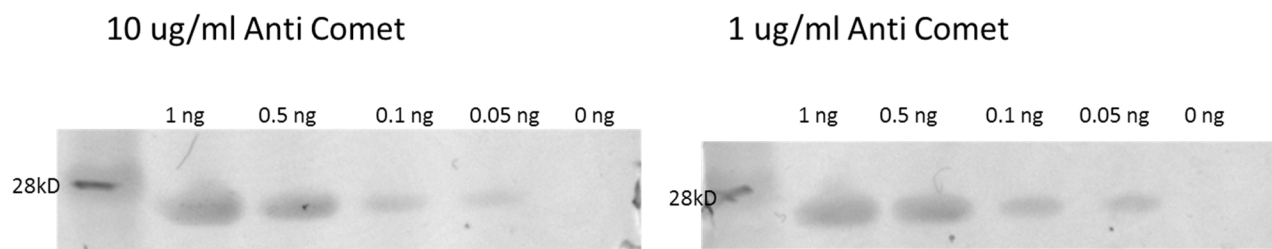
**Amount:** 200 µg of lyophilized antibody.

**Reconstitution:** Add 200 µl 50% glycerol in water to make 1 mg/ml stock. Incubate on ice for 15 minutes before use.

**Storage:** Store at 4°C. For long term storage (> 6 months), aliquot and store at -20°C.

**Positive control:** ATUM's Protein Paintbox™ vector FPB-26-441 or FPB-26-444 with CometGFP expressed under control of the T5 promoter in *E.coli* can be used as a positive expression control.

**Western Blot:** 1:100 to 1:1000 dilution recommended.



The lyophilized antibody was reconstituted to 1 mg/ml in 50% glycerol and stored at 4C before use. The antibody was further diluted to 10 ug/ml and 1 ug/ml in PBST with 10% PBS Superblock. The Comet antigen was loaded on the SDS-PAGE gel in a range of 0 to 1 ng/lane, then blotted onto 0.2 um nitrocellulose, and blocked with PBS Superblock. The primary antibody was rocked overnight at 4°C with the blot. Three washes of PBST were followed by the addition of Goat anti Rabbit IgG-HRP antibody diluted to 1:10,000 and the blots were incubated 1 hour at room temperature before washing and developing with TMB-Blot reagent.

Cross-reactivity with DasherGFP observed (not shown).

### Intellectual Property Statement

Available online: [www.atum.bio/company/terms-and-conditions](http://www.atum.bio/company/terms-and-conditions)